



Exploring the Impact of Societal Challenges on School Learner Development: An in-depth Analysis of Strategies for Effective Education Amidst Adversity

Muzamil Hussain AL Hussaini

Qurtuba University D.I.Khan

Corresponding Author: Muzamil Hussain AL Hussaini

muzamilqurtuba@gmail.com

ARTICLE INFO

Keywords: Learner, Challenge, School, Development, Adversity

Received : 10 July

Revised : 15 August

Accepted: 17 September

©2023 Hussaini: This is an open-access article distributed under the terms of the [Creative Commons Attribution 4.0 International](https://creativecommons.org/licenses/by/4.0/).



ABSTRACT

The contemporary educational landscape is often marred by a myriad of societal challenges that impede the holistic development of school learners. This research article delves into the intricate relationship between societal challenges and school learner development, examining how adversities such as poverty, inequality, violence, and cultural shifts influence the learning environment. Through a comprehensive literature review and empirical case studies, this article aims to elucidate the multifaceted impact of these challenges on educational outcomes and propose effective strategies for promoting learner development despite adversity. The study underscores the urgency of addressing societal issues to ensure equitable and optimal educational experiences for all learners

INTRODUCTION

This section presents a thorough review of existing literature on the interplay between societal challenges and learner development. It discusses the effects of poverty, inequality, violence, cultural shifts, and other challenges on various dimensions of education, including cognitive, emotional, and social development. Additionally, it examines the role of schools, teachers, parents, and communities in mitigating the negative impact of these challenges.

Societal challenges can have a profound impact on the development of learners in various ways. These challenges encompass a wide range of issues that arise from social, economic, cultural, and political factors, and they can significantly influence the educational experiences and outcomes of students. Here are some key ways in which societal challenges can affect learner development.

LITERATURE REVIEW

Poverty and Socioeconomic Inequality:

Economic disparities can lead to unequal access to quality education, resources, and opportunities. Learners from disadvantaged backgrounds often face barriers such as lack of proper nutrition, inadequate healthcare, limited access to technology, and lower-quality schools. These factors can impede cognitive and academic development, affecting their overall learning trajectory.

Violence and Safety Concerns:

Exposure to violence, crime, and unsafe environments can have detrimental effects on learners' emotional and psychological well-being. Students who experience or witness violence may struggle with anxiety, fear, and trauma, which can hinder their ability to focus on their studies and interact positively with peers and teachers.

Cultural Shifts and Identity Challenges:

Rapid cultural changes, migration, and multicultural environments can create challenges related to identity and belonging. Learners from diverse cultural backgrounds might face difficulties in adapting to new norms, languages, and social expectations, impacting their self-esteem and social interactions.

Family Dynamics and Support:

Dysfunctional family environments, single-parent households, or lack of parental involvement due to economic demands can affect learners' emotional development and academic performance. Supportive family structures contribute positively to students' confidence and motivation to excel in school.

Mental Health and Well-being:

Societal pressures, academic stress, and the prevalence of mental health issues can hinder learners' cognitive and emotional development. Addressing mental health challenges through counseling, awareness programs, and supportive school environments is crucial for optimal learner development.

Discrimination and Marginalization:

Discrimination based on race, gender, ethnicity, or other factors can lead to feelings of marginalization, low self-esteem, and reduced engagement in

education. Schools need to promote inclusivity, cultural sensitivity, and diversity to create a conducive learning environment for all students.

Access to Technology and Digital Divide:

In an increasingly digital world, lack of access to technology can hinder learners' ability to access information, collaborate, and develop digital literacy skills. The digital divide can exacerbate educational inequalities and limit students' exposure to modern learning tools.

Environmental Challenges:

Environmental issues such as pollution, climate change, and natural disasters can disrupt the learning environment by causing school closures, health risks, and emotional distress. Responding to these challenges requires adaptive teaching approaches and strategies to support learners during disruptions.

Lack of Role Models:

Learners from underrepresented groups might lack role models who inspire and motivate them to pursue their educational goals. Exposure to diverse role models can broaden students' horizons and encourage them to explore different paths.

Economic and Employment Trends:

Rapid shifts in the job market and economic uncertainties can impact learners' perceptions of the value of education. Ensuring that education is relevant to future career opportunities and equips students with adaptable skills is crucial for their long-term development.

Addressing these challenges requires a multifaceted approach involving educators, policymakers, communities, and families. By recognizing and actively addressing these societal challenges, education systems can create more equitable, inclusive, and supportive environments that promote holistic learner development despite adversity.

METHODOLOGY

Detailing the research methodology, this section explains the research design, data collection methods, and analytical frameworks employed. Qualitative case studies from diverse educational settings are conducted to provide a nuanced understanding of the strategies adopted to ensure effective education despite societal adversity.

Study Finding

This section features in-depth case studies that showcase successful implementations of the strategies discussed earlier. These case studies provide concrete examples of how schools, educators, and communities have overcome societal challenges to provide enriching educational experiences for learners

RESULTS AND DISCUSSIONS

Results

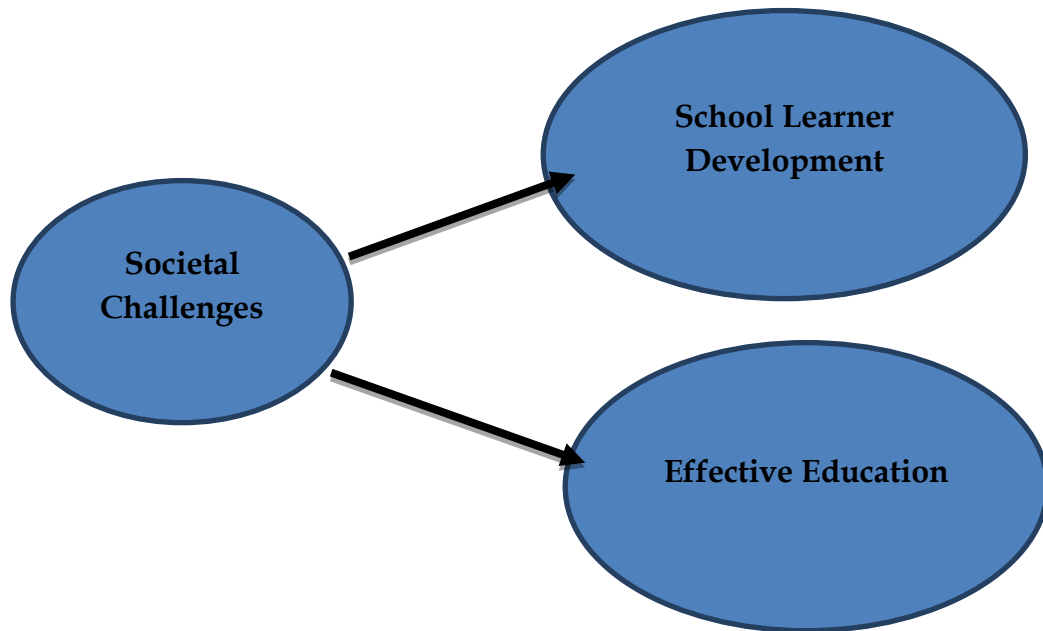


Figure 1. Conceptual Framework

Discussions

The discussion section critically examines the implications of the research findings and proposed strategies. It delves into potential barriers to implementation and highlights the need for collaborative efforts among various stakeholders to create sustainable changes in the education system.

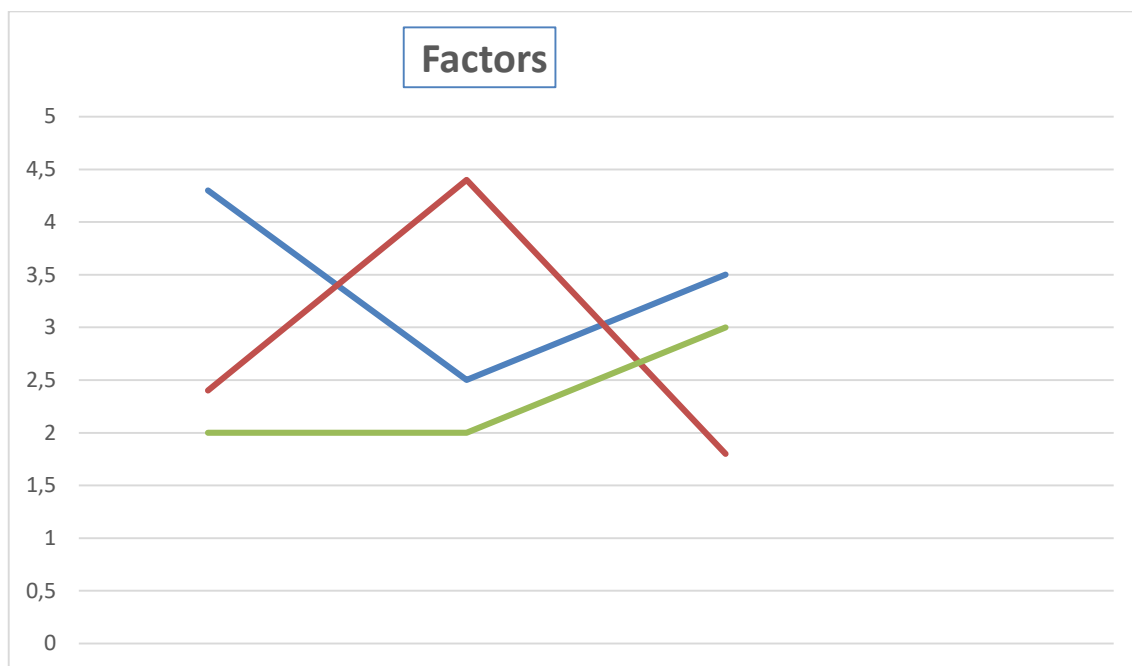


Figure 2. Basis of Individual Needs, Educational Quality Also Student Behavior in Detail

The consequences of climate change will not only be felt in the present but will also extend into the future. Today's children will be tomorrow's leaders, so it is important that we do everything we can to ensure that they are prepared to meet the challenges that lie ahead. By providing them with a quality education, we can help them develop the knowledge and skills they need to build a more sustainable future for us all. Various climate factors have adverse effects on children's education and this article explains the same. Various measures should be implemented to deal with these various factors so that the education and development of the child can be done in a better way

CONCLUSIONS AND RECOMMENDATIONS

This section suggests potential avenues for future research in the domain of societal challenges and learner development. It encourages scholars to explore emerging challenges and innovative solutions, contributing to an ongoing dialogue about enhancing education in the face of adversity.

Holistic Educational Approach

Education systems should adopt a holistic approach that addresses the diverse needs of learners, considering their cognitive, emotional, social, and psychological well-being. This entails integrating socio-emotional learning, mental health support, and character development into the curriculum to help learners cope with societal challenges and develop resilience.

Teacher Training and Support

Teachers play a pivotal role in mitigating the impact of societal challenges on learner development. Ongoing professional development programs should focus on equipping educators with strategies to create inclusive and supportive

classroom environments. Training should encompass culturally responsive teaching, trauma-informed practices, and classroom management techniques that accommodate diverse learners.

Collaborative Partnerships

Schools, communities, and relevant stakeholders should forge collaborative partnerships to provide a comprehensive support system for learners. Engaging parents, community leaders, social workers, and mental health professionals can create a network of resources that cater to various needs, from academic assistance to emotional well-being.

Resource Allocation and Equitable Funding

Adequate allocation of resources, particularly in underprivileged areas, is crucial for addressing societal challenges effectively. Equitable funding can support the implementation of innovative teaching methods, technology integration, extracurricular activities, and access to quality materials that enrich the educational experience.

Inclusive Curriculum and Pedagogy

The curriculum should reflect the diverse backgrounds, cultures, and experiences of learners. Incorporating diverse perspectives can promote inclusivity and foster understanding among students. Additionally, teachers should adopt differentiated instruction techniques that accommodate various learning styles and abilities.

Technology Integration

Harnessing technology can help overcome geographical barriers and provide access to quality education even in remote or challenging environments. Online platforms, digital resources, and virtual classrooms can supplement traditional teaching methods, making education more accessible and engaging.

Mentorship Programs

Establishing mentorship programs, where older students, community members, or professionals provide guidance to younger learners, can offer role models and additional support. Such programs can enhance learners' confidence, motivation, and personal development.

Policy Reforms

Policymakers should actively engage in reforming education policies to address societal challenges. This could involve advocating for increased investment in education, revising assessment methods to measure holistic development, and integrating social and emotional learning objectives into curricular standards.

Research and Data Collection

Ongoing research is crucial to continually assess the impact of societal challenges on learner development and the effectiveness of implemented strategies. Collecting data on outcomes and analyzing trends can inform evidence-based practices and guide future policy decisions.

Parent and Community Engagement

Schools should actively involve parents and communities in decision-making processes related to education. Regular communication, parent-teacher

associations, and community workshops can foster a sense of ownership and collaboration, ultimately enhancing the support available to learners.

Advocacy for Social Change

Educational institutions can play a pivotal role in advocating for broader societal changes that alleviate the root causes of challenges affecting learners. Engaging in community advocacy efforts can promote awareness and drive social change to create a more conducive environment for learning and development.

FURTHER STUDY

This study will explore both type of impact such positive and negative which will be beneficial for how to reduce these types of impacts and these are as.

REFERENCES

- Bandura, A. (1977). *Social learning theory*. Englewood Cliffs, NJ: Prentice-Hall.
- Bronfenbrenner, U. (1979). *The ecology of human development: Experiments by nature and design*. Harvard University Press.
- Csikszentmihalyi, M. (1990). *Flow: The psychology of optimal experience*. Harper & Row.
- Deci, E. L., & Ryan, R. M. (2000). The "what" and "why" of goal pursuits: Human needs and the self-determination of behavior. *Psychological Inquiry*, 11(4), 227-268.
- Dweck, C. S. (2006). *Mindset: The new psychology of success*. Random House.
- Erikson, E. H. (1963). *Childhood and society*. W. W. Norton & Company.
- Gardner, H. (1983). *Frames of mind: The theory of multiple intelligences*. Basic Books.
- Gee, J. P. (2003). What video games have to teach us about learning and literacy. *Computers in Entertainment (CIE)*, 1(1), 20-20.
- Gardner, H. (2011). *Frames of mind: The theory of multiple intelligences*. Basic Books.
- Hossain, N., & Hossain, A. M. (Eds.). (2020). *Education and Social Development: An Imperative for Inclusive Growth*. Springer.
- Hattie, J. (2012). *Visible learning for teachers: Maximizing impact on learning*. Routledge.
- Institute for Economics and Peace. (2021). *Global Peace Index 2021*. Sydney: Institute for Economics and Peace. [Link](#)
- Kuhn, D. (2007). Is direct instruction an answer to the right question? *Educational Psychologist*, 42(2), 109-113.
- Klees, S. J., & Samoff, J. (Eds.). (2010). *The World Bank and Education: Critiques and Alternatives*. Rotterdam: Sense Publishers.
- OECD (Organisation for Economic Co-operation and Development). (2019). *Education at a Glance 2019: OECD Indicators*. Paris: OECD Publishing. [Link](#)
- Ormrod, J. E. (2018). *Human learning*. Pearson.

- Piaget, J. (1970). Genetic epistemology. Columbia University Press.
- Ravitch, D. (2013). Reign of Error: The Hoax of the Privatization Movement and the Danger to America's Public Schools. Vintage
- United Nations. (2015). Transforming Our World: The 2030 Agenda for Sustainable Development. New York: United Nations. [Link](#)
- UNESCO (United Nations Educational, Scientific and Cultural Organization). (2015). Education for Sustainable Development Goals: Learning Objectives. Paris: UNESCO. [Link](#)
- United Nations Development Programme (UNDP). (2020). Human Development Report 2020: The Next Frontier - Human Development and the Anthropocene. New York: UNDP. [Link](#)
- Vygotsky, L. S. (1978). Mind in society: The development of higher psychological processes. Harvard University Press.
- World Economic Forum. (2021). The Global Risks Report 2021. Geneva: World Economic Forum. [Link](#)
- World Bank. (2020). World Development Report 2020: Trading for Development in the Age of Global Value Chains. Washington, DC: World Bank. [Link](#)
- Woolfolk, A. E. (2018). Educational psychology. Pearson.