

## Scarecrow Educational Tourism Management Training for Staf Candidates at Plantation Area

Wirawan Pamuji<sup>1\*</sup>, Suyanto<sup>2</sup>, Nun Jamianto<sup>3</sup>

University of Yos Soedarso Surabaya

**Corresponding Author:** Wirawan Pamuji [Shangwira.muji@gmail.com](mailto:Shangwira.muji@gmail.com)

---

### ARTICLE INFO

*Keywords:* Plantation Area,  
Method of Research,  
Beneficence of Scarecrow

*Received :* 3 December

*Revised :* 17 December

*Accepted:* 29 January

©2024 Pamuji, Suyanto, Jamianto: This is an open-access article distributed under the terms of the [Creative Commons Attribution 4.0 International](https://creativecommons.org/licenses/by/4.0/).



### ABSTRACT

Plantation Area with pest distractions are merely distinguished with animals and plants, the plants are destructed observation by farmer search of the matter because it clings on the body of flowers or planted fruits, animals can appear suddenly in surprise, as it requires scarecrow to expel them all. The Research applies Descriptive Qualitative Methods in training Students at University as worker candidates at field working area to manage the plantation in beneficences. Due that Field at Plantation Area is potentially disturbed by such omnivore animals, scarecrow are functioned to harass the pest in controlling high volume of pests and scarecrow to harass the disturbing animals at once to function it as Educational Tourism for School Students with all levels to train them how to function scarecrow in unique forms for expelling Plant Disturbing Animals

---

## **INTRODUCTION**

Plantation Area is an objective with many plants invested inside humid soil and it creates potential source for growing many fruits, plants, and vegetables. The potential source itself must be preserved either preventively or repressively, the way of preventive methods can be utilized with establishing fences, preparing poisons and injected trap with thorn inside ground, but the way is absolutely not effective when the owner may not be on the spot.

The above method is useful if the owner of the plantation field is active in guard the field a day long in supervision. It can be impossible to provide it because human has a limit skill in delivering supervision more than three hours. Therefore it requires extra guard in strengthening disturbing animals not to raid the field in a sudden time, in the matter field should be in supervision with such an idol with humanlike form named scarecrow.

Due that the frightening form of the scarecrow, many flying or land pests are warned to come apprehending the distance of the field, because they are felt like supervised by human and carrying out them to abandon the field before the human expel in real like situation rather than factual circumstance as it is. The scarecrow is very helpful for many farmers to assist them expelling many pests raiding the field.

The Plantation Field with Scarecrow Idol to expel the animals is regarded to propose candidates before they are completed to accept at the working place, The manager actually is realized to benefit the scarecrow as tourism place with educational background for all level students rather than only plantation area, therefore the manager should train the candidates how to function the thing as well possible for them as they can train students before they are advance to create a practice functioning the idol in harassing birds or rats in the field.

The provided mistakes about selecting methods to apply for training is because the candidates are not mostly from educational faculty background but mostly from management faculty as referred from Wahyuni and Ibrahim 2012; 30 – 37. Contextualized teaching even for preparing Students English Skills for Free trade n Global world domination.

Without forcing and Lessing students' behavior, manager should adopt how to train the subordinates to teach students as customers how to function the scarecrow well and in good manner in order that changing the affection of students in applying their affection manners in caring Natural Atmosphere in their life, because the affection methods selects an outcome to accustom students how to care for their environment too, to guard their natural field from disturbance as the scarecrow is a symbol of diminishing attack from pests and other living raid.

Whereas in practical condition, students have to understand their first indication they should do for comparing loving their selves and nature.

Abandoning egoism for keeping in touch in Nature is very proper decision, but applying it without certain consideration will provide no good for keeping condition for natural purpose so it is gradually considered to train students in balance condition by the staffs.

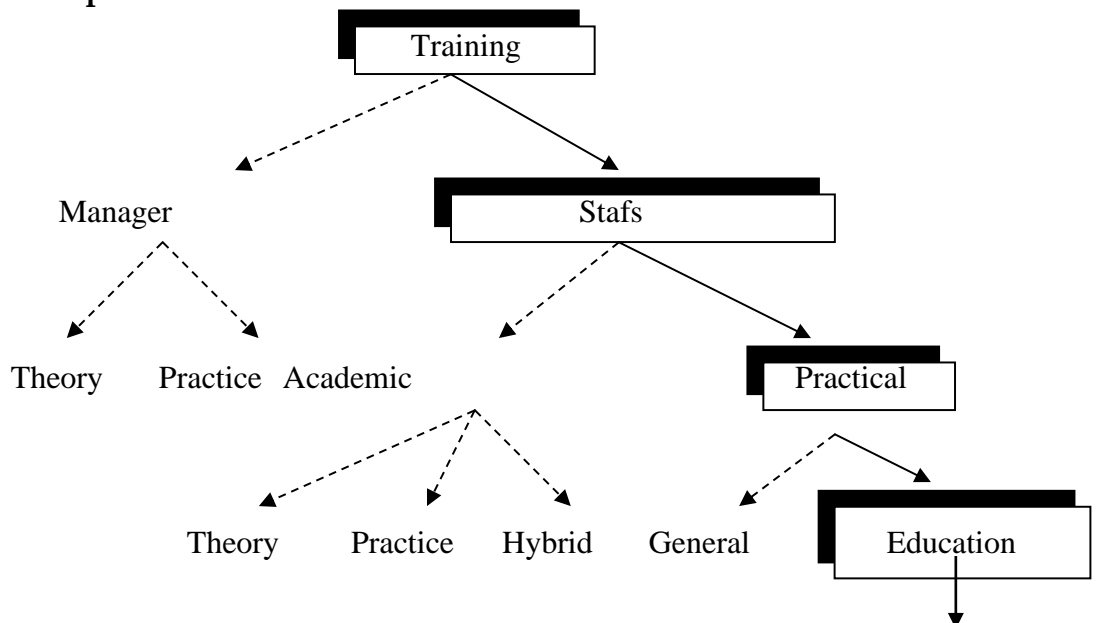
Basically, learning with adequate methods should be realized to practical assurance as the students are able to practice both preserving nature and their manner, not only advancing Natural Behavior but also functioning manner as proper condition of affection as the students could use Affection for either taking care or providing attention for the functions of nature.

Generally, The Implication of the training is very potential for students in having character of affection towards natural atmosphere, it consists of many steps materials for the training with many ways of teaching how to love nature in preserving it from raid of pests.

### LITERATURE REVIEW

This Research is designed based on literature and reference from books, it allows researchers to define characters how hypothesis is concluded by applying the concept of research with certain steps and procedures as their way of General Application of this methods is predicted as Indication to create affection for students all levels for nurturing nature by customizing the function of scarecrow in expelling pests in plantation area.

#### Concept of Research



**Note :**

- Observed
- Not Observed

Picture 1. The Concept of Research

## **METHODOLOGY**

In this chapter, the discussion depends on the reliable and cohesion from the explaining. Therefore, there is one basic question reflected from the previous paragraph. How General Application of this methods is predicted as Indication to create affection for students all levels for nurturing nature by customizing the function of scarecrow in expelling pests in plantation area.

The Objective of this research is to know about how is mother tongue strategy applied for standardized. The research analyzes about How General Application of this methods is predicted as Indication to create affection for students all levels for nurturing nature by customizing the function of scarecrow in expelling pests in plantation area.

The research is achieved to present and to support Affective Domain strategy for maintaining about how scarecrow be applied for standardized. The Research applies Descriptive Qualitative Methods in developing How General Application of this methods is predicted as Indication to create affection for students all levels for nurturing nature by customizing the function of scarecrow in expelling pests in plantation area.

Meanwhile, The Design is measured at the end of domain as the students are able to characterize an action and Indication to create affection for students all levels for nurturing nature by customizing the function of scarecrow in expelling pests in plantation area.

In a common way for any Indication to create affection for students all levels for nurturing nature by customizing the function of scarecrow in expelling pests in plantation area. Therefore, the certain steps are perpetually discussed to review that the method is proper or not to apply based on literal study.

## **RESULT AND DISCUSSION**

Plantation Instruction for students in all levels is required with. Integrated preparation about measurable scores and also teaching method required. Because, most of School methods have a communicative source, majority it is learnt about Dialogue and structure immersed in the case. Then, for Loving Care subject, there must be usually debatable method to have them easily communicate in English.

As it contains foreign ahead system namely Community Language Learning (CLL) which is method logically based on native translation referred to Affective Taxonomy Domain as quoted by Johnson about contextualized method as they should be arranged by the system to have a real circumstance in study (2002 : 25 in Rahayu, 2006 : 64)

The approach is about teaching which is based on the following principles:

- a. Learners develop process associated with discovery and Affective Domain by observing, inferring, formulating hypotheses, predicting and communicating.
- b. Lecturers use a lecturer style which supports the processes of discovery and Affective Domain.
- c. Textbooks are not the sole resources for learning.
- d. Conclusions are involved in planning, conducting and evaluating their own learning with the lecturers playing a supporting role.

A number of language teaching approaches make use of discovery - based approaches to learning, particularly communicative language teaching for affective taxonomy. (Richards et al, 1993).

The Result of Discussion is regarded for Ultimate Observation in Discovery Research in changing Children Behavior into Well-Practiced attitude in real situation.

As Described with following steps based on Krathwhol, Bloom and Masia, 1964:

Table 1. The Steps of Affection Training with Benefit of Scarecrow

<b>Training Staff Steps of Teaching How to Function Scarecrow with Affective Taxonomy Domain Instructed by Manager</b>	<b>Domain</b>
1. The manager greets candidates and ask candidates how train students for all levels to realize them about how to regard nature by supervising plantation with scarecrow	Receiving
2. The Candidates respond the question from the manager	Responding
3. Then The manager stimulates a respond from candidates to explain why the field should be supervised by the scarecrow and such things required. It is given until candidates answer the question with affective Indication such as loving Natural Atmosphere.	Valuing
4. The Candidates have finished answer the question and then they try to conclude how to teach either loving nature and making, using scarecrow from pests by creating scarecrow together	Organization
5. The Training Staff Candidates have finally discussed the taxonomy characters for students, they have to accept affective taxonomy to indicate loving care and natural affection by functioning scarecrow in making and benefit it And the trainer trains a box with snake inside to trap rats behind scarecrow and produce ultrasonic sounds to expel rats in attacking from land rather than birds attacking from sky as easy expelled by scarecrow.	Characterization

The CTL system is an educational process that aims to help students see meaning in the basic material they are studying by connecting academic subject with the context of their daily lives, that is, with the context of their personal, social and cultural circumstance. To achieve this aim, the system encompasses the following eight components: making meaningful connections, doing significant work, self-regulated learning, collaborating, critical and creative thinking, nurturing the individual, reaching high standards, using authentic assessment for allowing proper manners in loving Nature.

Therefore, every method is considered to permit and ban Teaching Procedure when there are some mistakes during the process. So the Training Staff should be aware about hierarchal assumption and procedure to regard it.

### **CONCLUSIONS AND RECOMMENDATIONS**

Then the manager stimulates a respond from candidates to explain why the field should be supervised by the scarecrow and such things required. It is given until candidates answer the question with affective Indication such as loving Natural Atmosphere then he Candidates have finished answer the question and then they try to conclude how to teach either loving nature and making, using scarecrow from pests by creating scarecrow together.

Then Finally The Training Staff Candidates have finally discussed the taxonomy characters for students, they have to accept affective taxonomy to indicate loving care and natural affection by functioning scarecrow in making and benefit it after having a training based on the steps of lesson plan.

### **ADVANCED RESEARCH**

This research is not impeccable during or after it applies as a result, Affective Domain consists of searching new knowledge to gain and retrain data from the material Contextual methods consist of real situation to comply so, but it is still answered in evaluation to balance and determine about how well it is used for both of consisting of it, Therefore it recommends next methods about how to function scarecrow not only functioned for plantation but also for other condition in use.

## ACKNOWLEDGMENTS

This presents gratitude for all parties as supporting data and findings as the research is finally conducted for summation as follow:

1. Mr, Ir.Bachtiar Prabowo MM as Rector of Yos Soedarso University Surabaya.
2. Mr Ruslin, S.H.,M.H as Dean of Faculty of Law University of Yos Soedarso Surabaya
3. All of Lecturers of State University of Yogyakarta Faculty of Elementary Level Pedagogic.
4. My Partner, Mr. Suyanto and Mr.Nun Jamianto from University of Yos Soedarso Surabaya Economic Faculty who supported Fund for the research and idea breaker.

## REFERENCES

- Arikunto, Suharsimi. 2006. *Prosedur Pendekatan Edisi Revisi VI*. Jakarta :Rineka Cipta
- Bolgar, R,R. 1998. *Teaching Methods*. England: Encyclopedia Compact Disk
- Degeng, I.N.S. 2008a *Pedoman Penyusunan Metode ajar*. Teknologi Pembelajaran P.P.S Universitas PGRI Adi Buana Surabaya.
- Degeng, I.N.S. 2008b *Pengembangan Modul Pembelajaran*. Teknologi Pembelajaran P.P.S Universitas PGRI Adi Buana Surabaya
- Freeman Diane Larsen. 1985. *Techniques and Principles in Language Teaching*. Oxford : Oxford University Press.
- Grellet, Françoise. 1992. *Developing Reading Skills A Practical Guide to Reading Comprehension*. Cambridge : Cambridge University Press.
- Grellet, F. 1992. *Developing Reading Skills A Practical Guide to Reading Comprehension*. Cambridge : Cambridge University Press.
- Grondund, N.E. 1985. *Measurement and Evaluation in Teaching*. New York: Macmillan Publishing Company.
- Hewitt, L.A.H. and Luc, d. *The Power of Focus for College Students*. Deerfield Beach, FL: Health Communications, 2005.

*Pamuji, Suyanto, Jamianto*

Hillerich, L.R. 1987. *The Principal's Guide to Improving Reading Instruction*. USA: Bowling Green State University.

Hornby, AS. 1995. *Oxford Advanced Learners Dictionary. International New Students Edition*. Oxford : Oxford Unifersity Press.

Taksonomi dan Tujuan Instruksional, Tim Pelatihan dan Pengembangan Pendidikan (P3) LLDIKTI VII Jawa Timur.