



{ MUDIMA }



The Identification of House Characteristic in the Karang Mumus River Bank Settlement Samarinda City Based on Settlement Development Patterns

Adventsa Novitasari^{1*}, Edward E. Pandelaki²

Master of Architecture, Faculty of Engineering, Diponegoro University

Corresponding Author: Adventsa Novitasari novitasariadventsa@gmail.com

ARTICLE INFO

Keywords: Identification House Characteristic, Karang Mumus River Bank Settlement, Samarinda City

Received : 1 May

Revised : 19 May

Accepted : 22 June

©2023 Novitasari, Pandelaki: This is an open-access article distributed under the terms of the [Creative Commons Attribution 4.0 International](https://creativecommons.org/licenses/by/4.0/).



ABSTRACT

An Living in the river region has certain characteristics and uniqueness, as the body of a house is familiar with the situation and area of the bengals. The island of Kalimantan is divided by bengals-large, characteristic and characteristic areas and other areas, one of which is the sharpening child of the master river that divides the city of Samarinda. The typology of the house of the Karang Mumus river comprises three types of structures that were built on the river's edge or commonly called floating houses, and those on the waterfront or transitional zone between the water and the land commonly called stilts, and the buildings on the ground. The research method used by the writer is the qualitative descriptive method of identifying house typology above the river Karang Mumus to evaluate whether it measures up to the standards associated with the settlements above the river. The purpose of this article was to find typology of the buildings at the settlement of the Karang Mumus river situated on the flotation segment, stage, and concrete. In addition to the configuration of forms and Spaces, it is acquired a developmental pattern that can have an impact on the characteristics of the settlement

INTRODUCTION

The settlement of the town of Samarinda, East Kalimantan, consists of unique geographic conditions, such as those oriented by rivers, forests,

and swamps. In between, the city of Samarinda was cut open by the master river of the mighty river. According to sari (2014) the architecture of sub settlements is a result of human adjustments to the environment around them, and then adjustments to the environment give rise to new habits of dwelling and living in rivers. From the habit comes a pattern of settlements supported by tools and utilities (sunarningah, 2011). The pattern of these settlements to create the setting of residential areas that would populate the riverbanks, raises the question, how can

the concept of riverbanks' claim pattern help support user activity?

The settlements on the Banks of the river are unique and attractive to the city of Samarinda despite the high variety of colorful people, including the indigenous people of Samarinda, as well as those who are urbanizing, to make a better living. According to Suprijanto (2001), typical of buildings on the riverbank, which include high levels of building density and intermix, have a history of settlement settlements, the me layout.



Image 1. Image Profile of the Karang Mumus
Source: BPS City of Samarinda, 2021

The settlements on the Banks of the gulf river mumus were those of the master river of samarinda, east kalimantan. Thus are an effect on river pollution. The reef of mumus became a water catch, when it rained. The free flow of the mumus river of 34.7 km (23 mi) and the catch area has a total of 31,475 acres [31,475 ha]. Additionally, the Karang Mumus was a river of climatic type a, which dried up when it was

dry and wet in the monsooning season. Thus at this rate the gulf of the gulf of the gulf of the gulf of the gulf of the gulf of the gulf of the gulf, rob, and the drying up of the river would have a dramatic effect on the buildings of residential settlements in the gulf bank of the river mumus.



Image 2. Existence Source Business Segment
Source : BPS City of Samarinda, 2021

Based on the description above typology of the settlements on the Banks of the Karang Mumus made it necessary to examine. This discussion is important to examine factors that influence the pattern of settlement and settlement on the Banks of the Karang Mumus river and how the settlement on the reef of mumus has developed. Thus, it was necessary to analyze tipology and the type of construction of the settlements that should have been applied to the Banks of the Karang Mumus river should be able to explain the typology that was best planned at the Banks of the mumus reef.

METHODS

Research methods are conducted by direct observation to conduct a review of various documents, photographs. In this regard researchers use qualitative research methods. The research approach USES a descriptive qualitative approach, which is to describe actual phenomena found during data collection and analysis of them, after which it evaluates the findings in the field.

Eldefrawi, S. (2013) Now, for the selection of sample samples used in this study, use a highhanded, random sampling. Selection character sample based on the physical character of the building. Of the population of houses above the river, it was classified by the physical characteristics of houses at least 20 years old, and it was above the water.

Table 1. House Population

The Population of Indoor Stilts on the Water			
Sub-district	Neigh bourhood	Number of houses	Sample number selected
Sempaja Selatan	31	22	11
	32	15	5
Terminjung Permai	1	11	5
	2	3	2
	6	10	2
	16	4	3
TOTAL	61		28

Source : Author Data, 2023

RESULTS AND DISCUSSION

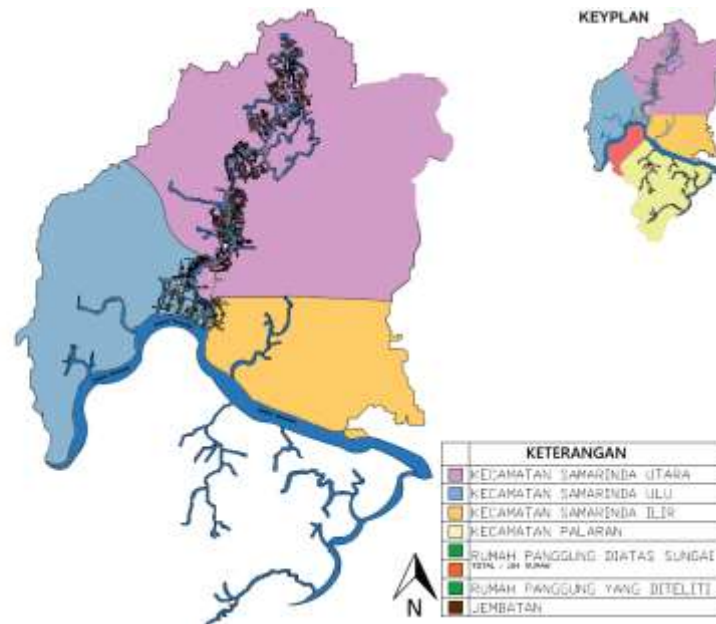


Image 3. Research Area
Source : Author Analysis, 2023

The study was made in the vicinity of the Bengal bank of the mumus reef, the city of Samarinda, East Kalimantan. Astronomically, the city of Samarinda stood between the 0021 '81 " - 10 or 09' 16" southern latitude and 116015 '16 " - 117024' 16" in length and through either the equator or the equator at latitude. It sources in geography. This section of the residence was on the mumus reef bank, located in the center of Samarinda. Kauko, T., R. Goetgeluk, and H. Priemus (2009) The positioning of this research into residential areas extends across the city center and has several divisions of buildings consisting of land segments, platforms, and flotation. Sanjay, U. (2003) This typology classifies and divides and describes particulars-aspects of which include :

1. Functions, such as those of space, and the kinds of structures used;
2. Neck-related aspects, such as geographic location, building period, social and cultural conditions;
3. Geometry, like layout or layout.

Early on, the settlement was settled by the flood ethnic to the majority of the settlements. The government is optimistic the rupiah will strengthen to rp9,100 per dollar, he said. The majority of citizens' activities and livelihood are dominated by swords, ranchers, rollers. But many of the residents have a side business by setting up shop as well as restaurants on the terrace.

The development pattern of the settlement on the Banks of the mumus reef originally began with its position at the river's edge. In position on a riverbank or riverbank, it creates a transition zone for both buildings on the land and those on the riverbank. The construction of homes in the transitional zone between land and river used semi permanent construction. For a building that USES floating architecture it is a building that sits on the waterfront. It is open to alternating between places and ocean currents, to prevent floating houses from moving or disintegrating to undesired places, and it thus attaching ropes within the stilts or along the line around them.

Development of the Karang Mumus Settlement

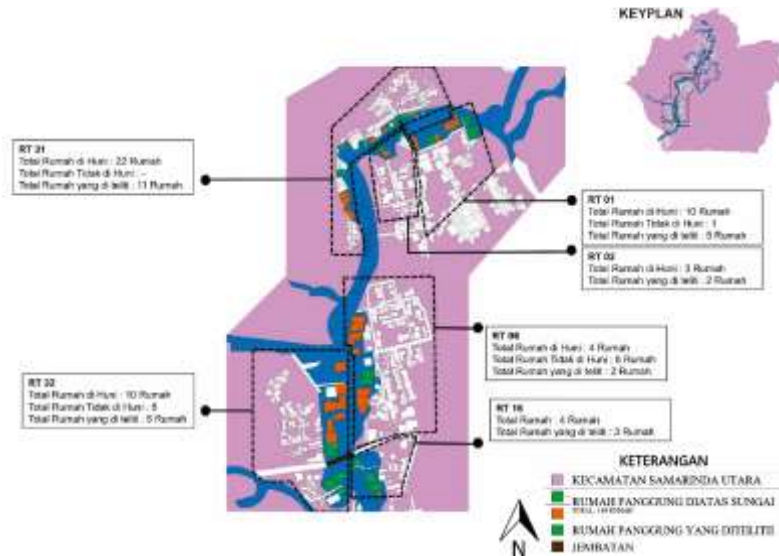


Image 4. The Course of the Settlement on the Karang Mumus River
Source : Author Data, 2023

The current development of the settlement of the Banks of the mumus river led to the river's course, but it now expanded inland. Where rivers once served as main access to transportation, socialification, and also today provide water for local communities to meet all the needs.

Chin, F. (1979) The progress of these settlements leading to land affects the typology of space, is where the change of space typology from which, but initially only linear looks toward the stream, but growing by an invasion or progress of the residential areas to the land.



Image 5. Picture the Condition of the Karang Mumus River Settlement
Source : Author Data, 2023

The development of homes in the settlements of the Banks of the presently mumus reef, this is because the direction of the river currently does not provide a principal source of livelihood for the people around it. Growth in transportation access to various public facilities has also led to considerations such as hospitals, markets, educational facilities, and other public facilities make it a major reason why the building's orientation faces land.

Residential Construction Structures

Among the characteristics of the buildings that dwell on the Banks of the mumus reef are 2 types of structures that form on the riverbank, including floating structures and platform structures. But with the growth of advancing living regions, the construction of houses began to move toward land. The result is that there are three types of buildings in the presently living on the Banks of the mumus reef, among other things:

1. Flotation House



Image 6. The Floating House of the Karang Mumus River
Source : Author Documentation, 2023

The buildings of the public housed on the bank of the Karang Mumus, using the foundation structure used in floating houses using constructed wooden materials or in meranti wood or ulin wood measuring 80-100 cm (80 in.) in diameter. The main reason is the use of meranti wood materials, since

meranti wood is cheaper and cheaper and durable. Versus the inverted value of the more costly and heavier ulin wood, making it more suitable for buoyancy construction materials.

2. Stilts House

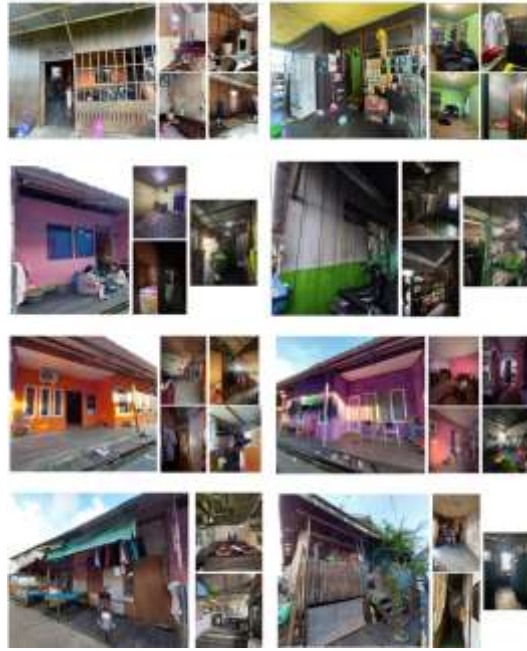


Image 7. Picture of the Karang Mumus River Settlement Stage House
 Source : Author Documentation, 2023

Those in riverbank settlements positioned within land and water borders, generally using the type of platform structure. Then, for the foundation of the building, the local wooden material called ulin,

or iron, was used. Ulin wood has excellent resistance because it is not easily shifting and can serve as a support to maintain the house.

3. Concrete House



Image 8. The Concrete Structure of the Karang Mumus
 Source : Author Documentation, 2023

Those in riverbank settlements positioned within land and water borders, generally using.

The Typology of the Karang Mumus

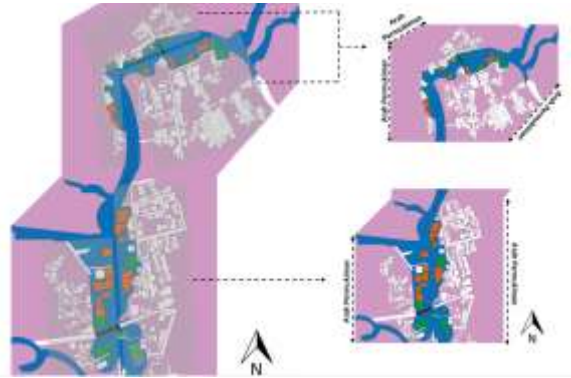


Image 9. The Typology of the Settlements of the Karang Mumus
Source : Author Analysis, 2023

According to Taylor 1 (1980) the administrative division of a settlement chamber consists of several types, including linear, cluster, and combination. The administrative division of the residential area has two types of three space administrations, between them linear and combination.

1. Linear

The linear pattern of this settlement lay on the Banks of a river that passed the direction of the mumus reef, which did not progress toward land. This pattern was created because the flow of the mumus river became a source of livelihood for the local people.

2. Combination

The combination of these settlements was largely applied to buildings that were oriented toward land. This combination results from an invasion of a building, which is oriented toward land or access to roads, so that growth and development

in the building sector affect the orientation of buildings and results in combination patterns.

User Perception and Condition

The housing status of the public was signed for the bulk of 8 people. The condition of the house is mostly wood material, so it's more vulnerable to a fire risk.

Then the status of the property of the host home, based on data obtained of illegal buildings, erected by individuals, without legal permission from the government. The construction conditions appear irregular, with the people building towards the Banks of the Karang Mumus.

The House of the Karang Mumus have less than ten square feet. The conditions are very unregulated, where the yard is very narrow facing the street. Clean water facilities are especially vulnerable, as communities continue to use river water for bathing and also for laundry, although drinking water is used by citizens.



Image 10. The Neighborhood of the Karang Mumus River
Source : Author Documentation, 2023

The street of the ward was spread only 1.5 meters [1.5 m] or so, with a concrete finish, so it was very narrow if any vehicle passed overhead.

Neighborhood layout was unregulated, since buildings in this settlement were illegal. So it gives a negative image to the settlement.

CONCLUSION

The character of the house in the living areas of the mumus reef was created because the comparison of the building's upright position and the type of materials or architecture was distinguished to three, among other things:

1. The building of the house above the river overlay a floating house with wood materials and fastening structures facing the river, with access to the current buildings away from small boats, but now it has been overtaken by land, creating a change in the fabric of space;
2. A house building in the turn zone using a platform is affected by the elevation of the river's water to match the ebb and flow of the river;
3. Current structures on earth use masonry materials, but in the process they are used to apply a frame of paint and platform, the fastening orientation of buildings that point toward land or street. Characteristics of the homes of the Karang Mumus settlements created by the influence of the progress in the settlements, the original buildings following the stream of the mumus reef, which was the cradle of the master river, thus forming the linear pattern, but now progressing in its way to land, creating a new pattern of mixing space.

REFERENCES

- Abdullah. (2000). *Upaya Meningkatkan Income Penduduk Kawasan Penyangga Kota Melalui Penataan Prasarana Permukiman*. Palu: Lemit Universitas Tadulako.
- Anonymus. (2021). *Kota Samarinda Dalam Angka 2021*. Samarinda: Badan Pusat Statistik Kota Samarinda.
- Chin, F. (1979). *Architecture Form, Space and Order*. New York: Van Nostrand Reinhold.
- Eldefrawi, S. (2013). *Impact of Physical Structure of Informal Settlements on The Social Integration of Residents*. Paper Presented at the International RC21 Conference 2013.
- Gan, T. (1999). *Living Water Traditional Settlements of Chines Water Towns*. McGill University: Thesis Montreal.
- Kauko, T., R. Goetgeluk, and H. Priemus (2009). *Water in Residential Environments*. Built Environment 35, 577-592.
- Sari, I. K. (2014). *Perubahan Karakter Arsitektur Permukiman Kampung Beting Kota Pontianak Kalimantan Barat*. Langkau Betang, Vol. 1(1)pp.62-65.
- Sanjay, U. (2003). Introduction Architecture for Kutch Reinterpreting the Lifestyle, Culture, Crafts and Architecture of Kutch Ref Ion in New Housing, 4-10.
- Suprijanto. (2001). *Model Pengembangan Kawasan Tepi Air*. KOLOKIUM Hasil Litbang