



Strategy for Securing Indonesia's Border Sea Area in the Sulu Sea Through Trilateral Maritime Patrol Indomalphi

Yurizki Aliyah^{1*}, Jonny Mahroza², Tasdik Mustika Alam³, Rudi Sutanto⁴, Sri Patmi⁵, Lukman Yudho Prakoso⁶

Sea Defense Strategy, The Republic of Indonesia Defense University

Corresponding Author: Yurizki Aliyah aliyah.rizki@gmail.com

ARTICLE INFO

Keywords: Sulu Sea, Border Sea, Security Strategy, Trilateral Maritime Patrol Indomalphi

Received : 2 December

Revised : 19 January

Accepted : 21 February

©2024 Aliyah, Mahroza, Alam, Sutanto, Patmi, Prakoso: This is an open-access article distributed under the terms of the

[Creative Commons Atribusi 4.0 Internasional](https://creativecommons.org/licenses/by/4.0/).



ABSTRACT

The Sulu Sea as well as the Sulawesi Sea, are semi-closed sea areas, these seas are targets of illegal maritime activities. The Sulu Sea and Sulawesi Sea, being hotspots for several serious maritime crimes such as terrorism, kidnapping, piracy, and other transnational crime problems require joint operations through INDOMALPHI as a common platform in dealing with security threats in the region. The purpose of this study is to analyze the security strategy of the Indonesian Border Sea area in the Sulu Sea through the Trilateral Maritime Patrol Indomalphi. The method used is qualitative research that is descriptive. Data collection was obtained by literature study through articles, journals and reports related to the Sulu sea area and threats arising in the Indonesian border area. After that, the author discussed the Strategy for Securing Indonesia's Border Sea Area in the Sulu Sea through the Trilateral Maritime Patrol Indomalphi. Furthermore, the author describes the steps that can be taken by the Indonesian government. The results show that in securing Indonesia's border sea area in the Sulu Sea, INDOMALPHI's trilateral maritime patrol strategy has played an important role. This collaboration between Indonesia, Malaysia, and the Philippines through this trilateral has succeeded in increasing security and stability in the region. In its implementation, INDOMALPHI's trilateral maritime patrol has faced several challenges. One is coordination between three countries that have different policies and procedures. In addition, other challenges are the vast and complex Sulu Sea area, as well as the presence of armed groups that are still active in the region. To improve the effectiveness of Indonesia's border sea area security strategy in the Sulu Sea through INDOMALPHI's trilateral maritime patrol, here are some suggestions that can be considered: Strengthening cooperation, Capacity building, Regional cooperation development, Community empowerment

INTRODUCTION

Indonesia's vast geography causes Indonesia to intersect with several countries, in this case bordering the seas of Malaysia, India, Singapore, Thailand, the Philippines, Vietnam, Australia, Palau, Timor Leste, and Papua New Guinea. From Miangas Island in the north to Dana Island in the south, this sea border covers 92 small islands in front (Raharjo, 2013). With the above predicate, Indonesia is vulnerable to various threats, especially in border areas that have the potential to endanger state sovereignty.

With these geographical conditions, Indonesia is obliged to maintain its sovereignty from military and non-military threats, especially in border areas. As the forefront, Indonesia's border areas must reflect a state that is safe from various threats and prosperous. In this reality, border areas are the main actualization of a country's territorial sovereignty (Bangun, 2017). Border areas have strategic potential in developing international trade activities which will later become the center of regional growth, in this case, especially the development of trade, industry, and tourism. This will provide opportunities for increased production activities which will further cause various multiplier effects (Mukti, 2001).

Security in sea border areas that are not optimal is a special work that must be completed immediately by the Indonesian government. Therefore, a defense policy is needed regarding defense improvement and concrete steps, especially in border areas (Aprilia, W., Sutanto, R., Prakoso, L. Y., 2023).

The Sulu Sea and Sulawesi Sea, become hotspots for several serious maritime crimes such as terrorism, kidnapping, piracy, and other transnational crime problems. Transnational crime is always evolving and increasingly complex. Through military activities related to maritime security, maritime patrol and aviation, operational technical working groups, and intelligence exchange, INDOMALPHI's Trilateral Maritime Patrol can become a common platform in dealing with security threats in the Sea border area.

The countries involved in Indomalphi's Trilateral Maritime Patrol are Indonesia, Malaysia, and the Philippines. The three countries are cooperating in conducting joint maritime patrols in the Sulu Sea to enhance security and stability in the region. The Sulawesi-Sulu Sea, adjacent to the Pacific Ocean, is a strategic international shipping route. Therefore, Indonesia established the Indonesian Archipelago Sea Channel (ALKI II) to support shipping activities in the region. Related to ALKI II, basically the Sulawesi-Sulu Sea is a Tri Border Area involving three countries, namely Indonesia, the Philippines, and Malaysia (Irawan. Gita., 2021).

Further research on the significance of implementing the Trilateral Maritime Patrol in securing Indonesia's border sea area in the Sulu Sea is crucial to understand the effectiveness of this strategy in combating maritime crimes and ensuring regional stability. As is known that the Sulu Sea is the most dangerous waters in the world. Pirate attacks, kidnappings and ransom payments in waters off the coast of Somalia have dominated media coverage around the world.

In 2011, at the height of the kidnapping crisis, 237 pirate incidents were reported off the coast of Somalia. Since then, however, piracy has dropped significantly off the coast of Africa, despite a recent pirate attack on a Comoros-flagged tanker and one reported incident in the third quarter of last year. Meanwhile in Asia, pirate attacks and piracy incidents, including fuel siphoning cases, halved in 2015-2016, due to measures taken by two parties, namely the government and the ship company.

But there is one small stretch of water in Southeast Asia that has the potential to become one of the most at-risk regions in the maritime world. Few people have heard of an area that still rarely makes headlines, when compared to the Strait of Malacca. But the Sulu-Sulawesi Sea, which includes waters around Indonesia, in eastern Sabah, Malaysia and the Philippines, is a worrying area. Since March 2016, a spate of kidnappings for ransom has been reported there and in waters east of Sabah. The attacks there are often attributed to the Abu Sayyaf

militant group operating in the southern Philippines, although some incidents of piracy appear to have been carried out by ordinary criminal groups.

The geographical complexity of Indonesia's border areas with neighboring countries highlights the importance of enhancing security measures to protect state sovereignty. More comprehensive understanding of the challenges and opportunities in the Sulu Sea can be achieved. Additionally, exploring the potential economic benefits of intensified security measures in border areas could shed light on the importance of investing in defense policies to promote trade, industry, and tourism growth in the region.

METHODS

This research uses descriptive qualitative to gain a deep and descriptive understanding of

phenomena or issues related to the Sulu region and threats arising in the Indonesian border area. Data collection is obtained by literature review or literature review by collecting various articles, books, journals, or other sources related to the Strategy for Securing Indonesia's Border Sea Area in the Sulu Sea through the Trilateral Maritime Patrol Indomalphi. The analysis techniques used in accordance with the theory of Milles, Huberman and Saldana (2014) are data collection, data condensation, presenting data (data display), and drawing conclusions or verification (conclusion drawing and verification). The validity test of the data used is Credibility (Internal Validity), Transferability (External Validity), Dependability (Reliability) and Confirmability (Objectivity) carried out at each stage it is described in the following research design:

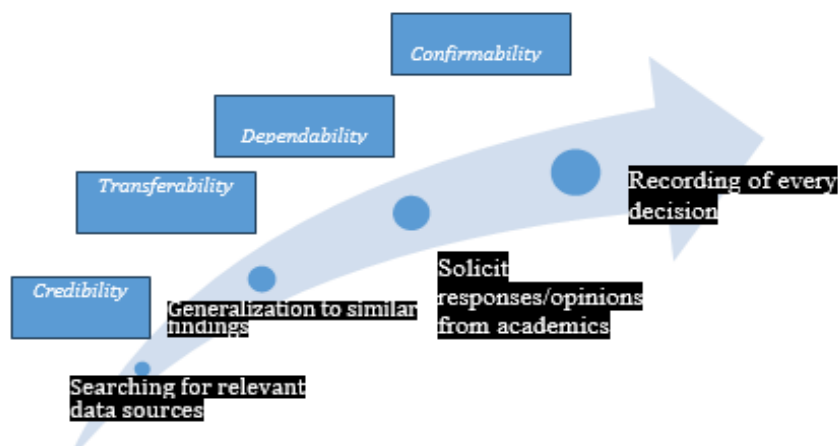


Figure 1. Research Design

Source: Data Processed by the Author, 2023

The above is done in order to obtain the accuracy of research results and the approach used by researchers is really consistent if used by other researchers in different topics (Gibbs, 2007 and Creswell, 2017). Proses analisis data yang dilakukan dalam penelitian ini adalah sebagai berikut Miles Huberman dan Saldana (2014) :

1. Data Collection: In this study, data will be collected from various sources, including related documents, recordings of interviews with related parties, observation sheets

2. Data Condensation: After the data is collected, the data will be selected and focused according to the formulation of the research problem. This data condensation process is very important to simplify the

information obtained so that it can be easily understood and analyzed further.

3. **Data Presentation (Data Display):** Data that has been condensed will be organized and presented in the form of integrated and easy-to-understand information. As this research is qualitative in nature, the data will be presented in the form of narrative text that provides a complete picture of the efforts made in securing Indonesia's border waters in the Sulu Sea.
4. **Conclusion: Drawing/Verifying:** The conclusions in this study will be based on the findings found during the research process, both from data collection to data presentation. The conclusions drawn will be verified with evidence found from primary and secondary data to ensure that the answers to the problems in this study can really be accounted for.



Figure 2. Sulu Sea on Map
Source: (Ruslan Maiborodin, 2023)

The Sulu Sea is in the north of the Sulawesi Sea and North Kalimantan, not far from Indonesia but not many Indonesians know it. The Sulu Sea has a very strategic geographical position and is considered the "most dangerous" water in the world, due to the issue of pirates and terrorism (Delina. A., Komara. F., 2020).

Southeast Asia has several sea lanes that are considered important as the shipping traffic of ships from all over the world. Merchant ships and commodity carriers from the world pass through the seas of Southeast Asia. The Strait of Malacca which

RESULTS AND DISCUSSION

One of the sea areas in Southeast Asia whose activity is quite dense is the Sulu Sea. This sea is located in the eastern part of Palawan, Philippines and Sabah, Malaysia and is in the western part of the Visayas and Mindanao, Philippines (Underwater Asia, 2019).

The Sulu Sea is a large sea in the southwestern part of the Philippines, separated from the South China Sea in the northwest by Palawan, and from the Sulawesi Sea in the southeast, the Sulu Islands. Borneo is in the southwest and the Visayas in the northeast.

The Sulu Sea has a number of islands. Cuyo Islands and Cagayan de Sulu are part of Palawan province while Cagayan de Tawi-Tawi and Turtle Islands are part of Tawi-Tawi province. The Sulu Sea is located at 8°25'06"N 120°19'10"E

is the most vital trade route in the region. This line connects ships from the Indian ocean to the Pacific, about 65,000 ships pass through this route every year (Ibrahim, H.M., Khalid, N., 2007). However, the Strait of Malacca is not the only route through which ships heading to the Pacific Ocean pass. For larger ships, the Malacca Strait route is difficult to pass because the channel is too shallow. Thus, the Sulu-Sulawesi Sea is an alternative ship shipping lane, especially for large ships heading to the Middle East from East Asia (Masya, Z. Y., 2018).



Figure 3. Map of Sea Trade Routes in Southeast Asia
Source: (Masya, Z. Y., 2018)

The high level of shipping activity in the Sulu-Sulawesi Sea, besides being profitable, on the one hand has a high risk of security threats. These trafficking routes are prone to transnational crimes such as organized crime, piracy, narcotics trafficking, human smuggling and trafficking, environmental security, and terrorism. This maritime crime poses a regional and global security threat and can have an impact on international trade. Of the several examples of security threats, armed piracy has attracted more international attention. Of course, this is one of the problems that threaten regional security, not only in terms of traditional security, but also in terms of non-traditional security (Masya, Z. Y., 2018).

Threats in the Sulu Sea

This security threat in the Sulu-Sulawesi Sea has an impact on the three littoral countries not only in terms of security, but also in terms of economy and politics. This situation necessitates increased cooperation, it is important to refer to the draft agreement and the reasons for binding the three countries to existing institutions. Indonesia, Malaysia and the Philippines are certainly seeking to

improve maritime security in their sea areas. However, tackling these maritime security threats will be difficult if done independently by every country in the region. The issue of ship piracy in the Sulu-Sulawesi Sea prompted Indonesia, Malaysia and the Philippines to strengthen cooperation to address this threat. This is marked by an agreement between the three countries to carry out joint military patrols (Masya, Z. Y., 2018).

This cooperation was marked by a meeting of three foreign ministers from Indonesia, Malaysia, and the Philippines on May 5, 2016 to hold a joint declaration *on Immediate Measures to Address Security Issues in the Maritime Areas of Common Concern among Indonesia, Malaysia and the Philippines*. Indonesia, Malaysia, and the Philippines also agreed to immediately compile *a Standard Operating Procedure (SOP)* for the cooperation. This meeting resulted in *a Joint Statement*, namely *coordinated patrols, joint military command posts, Trilateral Maritime Patrol Working Group (TMPWG), transit corridors in sea areas, and exchange of intelligence information on maritime areas* (Masya, Z. Y., 2018).

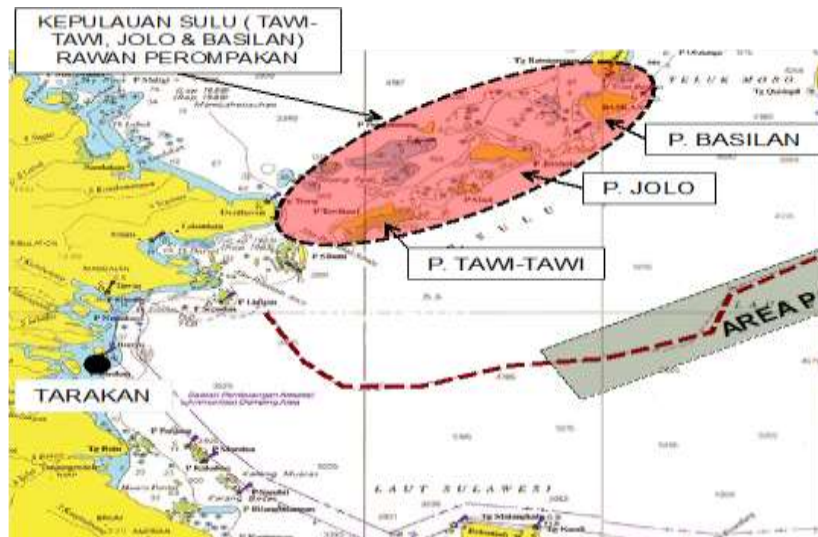


Figure 4. Indonesia Philippines Border Situation
Source: (Maritim news., 2017)

Sea Defense

Indonesia is an archipelagic country with thousands of islands whose territory is dominated by water. Therefore, it is no exaggeration to say that sea power is the main defense resource that must be optimally empowered. According to another point of view, the vast territorial waters of Indonesia must also be seen as a space that raises many potential threats, which if not strictly defended will be the root of problems that endanger state sovereignty. Threats using sea lanes can come from a variety of sources, both internal and external sources, both from state actors and non-state actors. Each source of threat has an intensity or level of danger that can vary as well, thus demanding readiness from national forces, especially those played to guard maritime security, namely the Indonesian Navy (Rudi Sutanto, et al., 2023).

The empowerment of the Navy in order to maintain the integrity and sovereignty of the country is the basic concept of sea defense (Wahyono, 1996). It is explicitly stated in Law No. 32/2014 on Marine, that "The sea defense system was formed with the aim of managing state sovereignty, maintaining the territorial integrity of the Unitary State of the Republic, and protecting the entire nation and all Indonesian bloodshed from threats and disturbances to the integrity of the nation and state in the sea area". It is also explained in the legislation, that the sea

defense system is organized by the Ministry that organizes government affairs in the field of defense and the Indonesian National Army (TNI). Specifically, the Navy is the main bearer of the implementation of the sea defense in question. The Navy and its various weapon systems are the main elements of sea power that are part of national security (Wahyono, 1996). Thus, sea defense is also an inseparable part of national defense. There are three pillars put forward by the Navy in organizing sea defense (Lukman Yudho Prakoso, et al., 2023), namely:

- a. Made a capture effort since the base.
- b. Destroying enemies outside the boundaries of the national sea area, namely in the areas of:
 1. The Buffer Defense Field that is outside the boundary line of Indonesia's EEZ and the air layer above it.
 2. Main Defense Field, starting from the outer boundary of the territorial sea to the EEZ of Indonesia and the air layer above it.
 3. Field of Resistance, namely the area of territorial sea and archipelagic waters and the air layer above them.

If the enemy succeeds in penetrating the three terrains, then the enemy will be destroyed on land according to the doctrine of Sishanta Defense with a deterrence approach and layered defense is sought to overcome all threats to state sovereignty so that war

does not occur on land because it has the potential to cause heavy casualties. If it cannot be avoided, then the last defense deployed is the universe defense system (Sishanta) (Lukman Yudho Prakoso, et al., 2023).

Naval Forces

According to Rudy Sutanto in his book entitled *Naval and Maritime Strategy*, the navy is a branch of a country's armed forces whose main mission is to conduct military operations in and from the sea (Sutanto, R., 2022). In certain countries, the navy is combined with the army or armed forces. Some agencies, such as the U.S. Coast Guard, are not fleets capable of conducting substantial maritime operations (USCG). The navy is basically a quick and adaptable response force (Sutanto, R., 2022). It is convenient to alert forces in case of a budget crisis when a difficulty deal is in effect, but others can engage in peacetime missions (such as maritime security or humanitarian operations). Because of its flexibility and versatility, the navy can meet this need. The difference between flexibility and versatility is that flexibility refers to the different ways a fleet can be deployed, whereas versatility refers to a variety of tasks that can be performed simultaneously or in the same sequence of ships. Both are important assets for fleets in any region of the world that has experienced major budget cuts.

Defense Policy

Challenges for Indonesia's future development in several fields, including: how the defense posture faces regional and international security constellations related to various dynamics of power shifts; anticipation of incidents of territorial conflicts related to sovereignty and resource competition; cooperation in the investigation and prosecution of transnational crimes; management of cybersecurity, information and counterintelligence; and mitigation of the impact of natural disasters. The process of formulating a country's defense policy as a reaction to various international phenomena that are directly or indirectly related to state defense and security. On the other hand, a country's defense policy affects the structure of world power. The protection of a country's interests in the global order

is directly related to its policies (Aprilia, W., Sutanto, R., Prakoso, L. Y., 2023).

In the *Sea Defense Policy Book* (Lukman Yudho, et al, 2021), several parties involved in policy making are conveyed, namely:

1. Government

The government is a public servant, so the government in taking every policy must pay attention to the interests of many people (society or people). The parties involved in policy making are the Regional Development Planning Agency (BAPPEDA), the Regional Revenue Office (DISPENDA), the Market, Hygiene and Landscaping Office, the Regional Settlement and Infrastructure Office (KIMPRASWIL).

2. District House of Representatives

The DPRD has an important role as a representative of the people in channeling their aspirations. The DPRD must remain a reflection of the community it represents in making a policy related to the interests of many people (the people), so that to be able to fulfill this desire the DPRD must communicate with the community to seek input in the formulation process. This is possible in order to find and explore what the community wants.

3. Public Figures

The participation of community leaders in the policy-making process is expected to play an active role indirectly because community leaders are one of the places for the community to convey everything related to the problems faced by the community, community leaders are people who are highly respected and respected by the government. Community leaders who are leaders or who are appointed in the local community leader's environment.

4. Medium Mass

The media can play a role in the policy-making process, because the media peels or raises issues that are being hotly discussed by the public and government.

5. Interest Groups

In making a policy, the government sometimes has to deal with hidden forces, where these forces take advantage of well-

ordered conditions. These interest groups are in other words hidden forces such as community organizations, thugs, and informal organizations. In the Sea Defense Policy Book (Lukman Yudho, et al, 2021), conveying the policy-making process which is a series of stages by stages which include:

A. Policy Agenda Preparation

At this stage there is a problem formulation to find knowledge relevant to the policy on the definition of the problem. At this stage there is a problem formulation to find knowledge relevant to the policy on the definition of the problem.

B. Policy Formulation

This stage requires an understanding that can provide policy-relevant knowledge about future issues as an alternative course of action. Forecasting examines the potential future, is normatively valuable, recognizes obstacles that may occur in achieving goals, and stimulates the political feasibility of various options (Sujianto, 2008: 38).

C. Policy Adoption

In this stage, make recommendations on alternatives to be selected through a knowledge approach that is relevant to policy principles. Recommendations help estimate rational levels and uncertainties, recognize externalizations and multiple consequences, define criteria for choice decision-making, and determine administrative accountability for policy implementation.

D. Policy Implementation

At this stage, policy making seeks to monitor the consequences of previously taken policies on the basis of knowledge relevant to these concepts. Monitoring helps assess compliance levels, uncover unintended consequences of policies and programs, identify barriers and barriers to implementation, and locate those responsible at each stage of the policy.

E. Policy Evaluation

The evaluation section requires policy-relevant knowledge of discrepancies between expected and actually produced policy performance. This objective assists policy makers at the policy assessment stage of the policy-making process, contributes clarifications and critiques of the

underlying values of the policy, assists in adjustment of problems. The policy that has been established as stated in the Trilateral Cooperative Arrangement of Indonesia, Malaysia and the Philippines, states that so far it only applies to the military agencies of the three countries. Responding to threats in the Sulawesi – Sulu Sea that are non-traditional and various types of threats, it is also necessary to involve civilian law enforcement agencies from the three relevant countries (Bakamla, 2021).

Non-traditional threats that occur such as threats to marine and fisheries resources, customs, immigration, narcotics, terrorism, and other threats. Not only that, the states involved also need to pay attention to threats from non-state actors. Here the context referred to by non-state actors is citizens in Sanghie-Philippines who do not have citizenship and often commit crimes at sea. In addition, the target is certain individuals and countries, which does not rule out the possibility of massive impacts (Bakamla, 2021).

Policy Implementation

Based on the diverse perspectives of experts in the notion of policy implementation, it can be stated that policy implementation is a critical step in the process of action of various actors to achieve the objectives that have been set, with targeted actions to achieve the consequences of the activities. To increase understanding by clearly describing variables or elements that have a significant impact on the implementation of public policies (Aprilia, W., Sutanto, R., Prakoso, L. Y., 2023).

According to Lukman Yudho Prakoso (2016) that policy implementation can be successfully completed if it meets the characteristics of Integrative, Interactive, Transparency, and Control (IITCA) (Prakoso L. Y., 2021) The first factor, namely integrative, is related to the need for integration between government institutions that are interested and have a role in national defense development. The second factor, interactive, is a determinant of the effectiveness of policy implementation. The third factor, namely transparency, is a factor related to the openness of the

content and objectives of the policy for the community. The fourth factor, controlling, is a factor that determines the compatibility between implementation and policy plans. The last factor, namely accountability, is the main shaping factor of public trust in policies and institutions authorized to formulate and implement these policies.

In addition to paying attention to five factors in accordance with the concept of IITCA theory (Integrative, Interactive, Transparency, Controlling, Accountability) developed by Prakoso (2016), there is actually also another important factor that needs to be considered for its influence on the policy

implementation process, namely proportional factors. The proportional factor is balance, appropriate or ideal. The policy implementation process can run smoothly if it is proportionate in its implementation, in this case it is appropriate and fits as needed. However, if there is a discrepancy, this will disrupt the implementation of the policy.

The implementation of defense policy in dealing with non-military threats in the maritime border area with Malaysia and the Philippines, according to IITCA theory and its relation to proportional factors as discussed above can be described as follows:

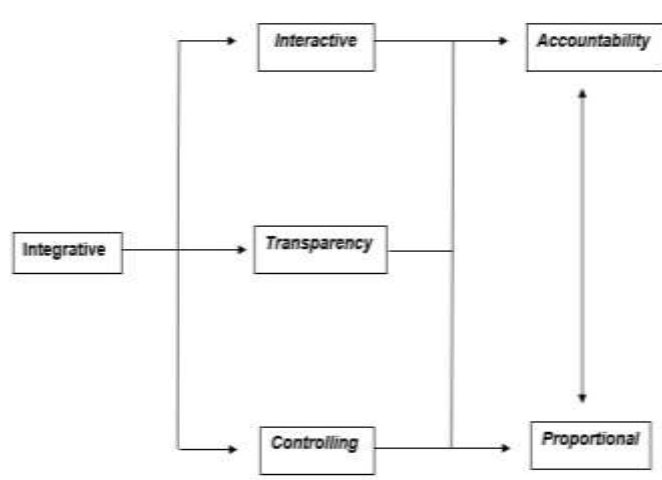


Figure 5. Development of IITCA Theory with Proportional Factors
Source : (Lukman Yudho Prakoso, 2016)

Conclusion of the Theory of Defense Policy Implementation from Lukman Yudho Prakoso, is Public policy in the defense sector is a policy implementation that can be achieved well if it meets the Integrative, Interactive, Transparency, Control and Accountable (IITCA) factors. From public policy in general, it needs to be implemented through careful consideration, producing policies that are in line with the forms of threats faced. These five components and aspects influence the implementation of defense policy in developing national defense components, serving as a catalyst in projecting and predicting foreign policy and defense industry cooperation.

Trilateral Maritime Patrol Indomalphi

The security of the Sulu Sea is crucial to the shipping and trade activities that cross it. The increasing crime rate at sea poses a threat to passing ships, especially ships carrying high-value cargo. Security instability in the Sulu Sea has led to cooperation between Indonesia, Malaysia and the Philippines, which are directly adjacent to the Sulu Sea. Based on these problems, the Trilateral Cooperation Efforts of Indonesia, Malaysia, and the Philippines (INDOMALPHI) in Maintaining the Security Stability of the Sulu Sea (Atamimi, R. A., Azzqy, A. A. R., , 2020).

Trilateral Maritime Patrol Indomalphi is a cooperation between Indonesia, Malaysia, and the Philippines in conducting sea patrols in the Sulu Sea. This cooperation was established in 2016 to address

maritime security concerns in the region, especially related to piracy cases by the Abu Sayyaf group (Rustam, I., Bustami, S. Y., & Sabilla, K. R., 2022). Since its launch, Indomalphi patrols have successfully deterred and defended against attacks on ships by pirates and violent extremist organizations such as the Abu Sayyaf group (Indo-Pacific Defense Forum, 2022).

The establishment of INDOMALPHI is a form of effort from the three countries in dealing with emerging threats in the Sulu Sea. INDOMALPHI is a subregional cooperation based on common interests. This cooperation reflects the theory explained by Barry Buzan (1983) about the Regional Security Complex which explains how a

group of countries that have security problems that are interrelated with each other and cannot be separated (Buzan, 1983). Indonesia, Malaysia, and the Philippines in the face of crimes at sea by the Abu Sayyaf group in the region between the three countries have related security concerns where the Sulu Sea became the Locus Delictie of the Abu Sayyaf series of crimes during 2014-2016 and the three countries are Littoral States directly adjacent to the Sulu Sea. This theory also explains that the proximity of geographical areas results in dependence on each other, and this is also the case with INDOMALPHI where the three countries need each other in an effort to secure the Sulu Sea. (Atamimi, R. A., Azzqy, A. A. R., , 2020).

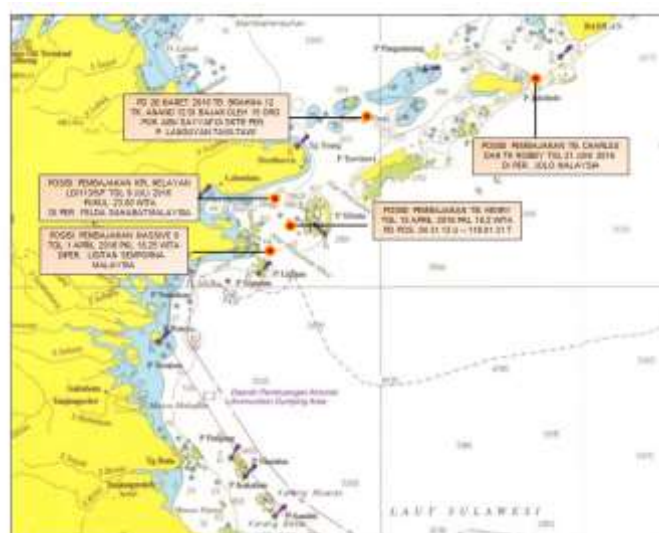


Figure 6. Abu Sayyaf Piracy Position
Source: (Maritim news., 2017)

The Ministry of Defense of the Republic of Indonesia in this case the Director of International Defense Cooperation of the Directorate General of Defense Strategy Kemhan (Dirkersinhan Ditjen Strahan Kemhan) and as Head of Delegation (HoD) of Indonesia Brigadier General of the TNI Steverly C. Parengkuan chaired the 21st INDOMALPHI Joint Working Group (JWG) Meeting on The Trilateral Cooperative Arrangement (TCA), in Jakarta (Kemhan RI, 2023). Brigadier General Steverly C. Parengkuan in a meeting attended by Director of Maritime Security and Sovereignty Division, National Security Council, Prime Minister's

Department of Malaysia Azizi bin Wahab and Director of Office for Strategic Assessments and International Affairs, Department of National Defense, Republic of the Philippines Marita I. Yoro stated that INDOMALPHI should be appreciated for making a positive contribution in maintaining security along the maritime border the three countries, particularly the Sulawesi Sea and Sulu Sea, which have always been hotspots for several serious maritime crimes such as terrorism, kidnapping, piracy, and other transnational security issues (Kemhan RI, 2023).

Transnational crime is always evolving and increasingly complex. Through military activities related to maritime security, maritime patrol and aviation, technical working groups on operational areas, and intelligence exchanges, INDOMALPHI can become a common platform in dealing with security threats in the region. To that end, Indonesia, Malaysia and the Philippines agreed to strengthen cooperation through Trilateral Port Visits, maritime training activities, and the resumption of the Joint Mission Patrol Team in 2024 which was previously suspended due to Covid-19 constraints. The results of this meeting are expected to significantly enhance collaborative efforts among our three countries and contribute to overall regional peace and security (Kemhan RI, 2023).

JWG TCA Indomalphi is a cooperation forum between Indonesia-Malaysia-Philippines in the form of a meeting of the three countries that carry out the exchange of information and intelligence data as well as air patrols and sea patrols. This meeting was attended by 30 personnel from Indonesia including the Ministry of Defense, Sops TNI, Sintel TNI, BAIS TNI, Koarmada II, Koopsud II and Lantamal XIII / Tarakan. While the delegations of Malaysia and the Philippines as many as 20 people. At the meeting, Marine Colonel (P) Eka Satari, Paban V / Kerkamtas Sops TNI led the Trilateral Maritime Patrol (TMP SWG) working group session (Puspen TNI, 2023).

It is affirmed that no illegal or suspicious activities were reported during the period. The result of TMP Indomalphi's operation from the form of TMP Indomaphi cooperation occurred a rescue carried out by KD Todak (Malaysian Ship) against ML Rihana Ship (Philippine Ship) due to engine failure in Sulu waters. The ship was handed over to BPR Florencio (Philippine Ship) and then brought to Tawi-Tawi for evacuation, all crew were reported to be safe (Puspen TNI, 2023).

Main objectives of Indomalphi's Trilateral Maritime Patrol

The main objective of the Indomalphi Trilateral Maritime Patrol is to enhance security and stability in the Sulu Sea. This initiative is carried out

through joint maritime patrols between Indonesia, Malaysia, and the Philippines with the main objective of maintaining security and preventing illegal activities in the region (Gunawan, 2017).

In carrying out the Indomalphi Trilateral Maritime Patrol, the three countries cooperate in terms of intelligence gathering, surveillance, and law enforcement in the Sulu Sea. The aim is to identify and crack down on any illegal activities that occur, such as piracy, arms smuggling, and terrorism.

In addition, Indomalphi's Trilateral Maritime Patrol also aims to build capacity and enhance cooperation between the three countries in terms of handling maritime security. The rapid and effective exchange of information and good coordination among the authorities of the three countries are the main focus in achieving this goal.

With the existence of the Indomalphi Trilateral Maritime Patrol, it is hoped that security and stability in the Sulu Sea can continue to be improved, so that the region can become a safe and prosperous zone for all interested parties.

Responsible for Coordination of Indomalphi's Trilateral Maritime Patrol

In coordination with the Indomalphi Trilateral Maritime Patrol in the Sulu Sea, responsible parties include:

1. Indonesia: The responsible parties of Indonesia are the Coordinating Ministry for Political, Legal and Security Affairs (Kemenko Polhukam) responsible for coordinating and overseeing the operations of the Indomalphi Trilateral Maritime Patrol in the Sulu Sea, and the Indonesian Ministry of Defense which is also involved in this cooperation and plays a role in providing resources and operational support for maritime patrols in the Sulu Sea.
2. Malaysia: The responsible party of Malaysia is the Malaysian Ministry of Defence.
3. Philippines: The responsible parties of the Philippines are the Armed Forces of the Philippines (AFP) and the Philippine Coast Guard (PCG).

Indomalphi Trilateral Maritime Patrol Cooperation in the Sulu Sea

The process of cooperation between Indonesia, Malaysia and the Philippines in the maritime patrol of the Indomalphi Trilateral Maritime Patrol in the Sulu Sea includes several steps. First, the three countries held meetings and negotiations to discuss the objectives, strategies and framework of joint maritime patrols. These patrols aim to improve security and stability in the region.

Thereafter, the parties involved shared intelligence related to illegal activities in the waters of the Sulu Sea. This information includes terrorist activities, piracy networks, drug smuggling, and other cross-border illegal activity crimes that may threaten maritime security.

Furthermore, these countries conduct joint maritime patrols involving warships, patrol aircraft, and marine forces from each country. The parties involved conduct operational coordination to ensure the effectiveness of patrols and countermeasures in Sulu Sea waters. This coordination involves exchanging information, planning operations, and

conducting surveillance and law enforcement in the region, including arresting criminals and combating terrorist networks.

The cooperation process also involves personnel exchanges and training between patrol members from the three countries. The parties involved also conduct training and capacity building for personnel involved in maritime patrols. It aims to increase operational capacity and capability in dealing with maritime security threats in the Sulu Sea.

Trilateral Maritime Patrol Port Visit Indomalphi 2023 Joint Exercise

The Trilateral Maritime Patrol Port Visit Indomalphi 2023 joint exercise held in Tarakan, North Kalimantan, was successfully organized by Lantamal XIII, the cooperation of 3 (three) countries between Indonesia-Malaysia-the Philippines (Indomalphi) is a collaborative effort in maintaining the stability of border sea security which is prone to crime and lawlessness through joint patrols with the 3 countries (Pioneer Wiratama, 2023).



Figure 7. Joint Exercise Trilateral Maritime Patrol Indomalphi 2023

Source: (Pioneer of Wiratama, 2023)

The activity, which was carried out from 16 to 19 October 2023, involved the Koarmada II Element, namely KRI Singa-651 who guided or led the Royal Malaysian Navy Ships which fielded 2 (two) warships, namely KD Badik 113 and KD Pope 3507 after docking and being welcomed by Lantamal XIII Soldiers at the TNI AL Mamburungan Pier, then a series of activities were carried out including fun games or sports with the Navy with TLDM in Mako lantamal XIII, CC (Courtesy Call) to the Mayor of

Tarakan and to Lantamal XIII, Gala Dinner at KD Badik, Tour City which visited 2 places, namely the Tidung Traditional House and MCC (Maritime Command Center), and closed with the implementation of Saylor night which became a night of familiarity with the Indonesian Navy, TLDM which was also attended by the Philippine Delegation (Pioneer Wiratama, 2023).

On the last day of the joint exercise, the Trilateral Maritime Patrol Port Visit Indomalphi 2023 was released from the TNI AL Mamburungan pier, which is the culmination of the implementation of cooperation between 3 (three) countries, namely

Indonesia-Malaysia-Philippines (Indomalphi) with the implementation of the Sea Phase joint patrol exercise to improve coordination in securing border waters (Pioneer Wiratama, 2023).



Figure 8. KRI Singa 651 Leads Joint Exercise with Port Visit Indomalphi 2023
Source: (Pioneer of Wiratama, 2023)

On a different occasion, Lantamal XIII Commander revealed that by looking back at the beginning of the cooperation built, it will feel how important the Indomalphi Trilateral Cooperative Arrangement is implemented. Trilateral Maritime Patrol and Trilateral Air Patrol carried out in the Maritime Invest Area (AMI) have so far produced improved results as expected. But with this, do not let your guard down to continue to secure this shipping lane that is of mutual concern. This joint commitment must be continued with various other activities that can improve the quality of cooperation and coordination that has been built so far. Researchers believe that with good cooperation, crimes at sea, especially in border sea areas, will be thwarted, so that the people of Indonesia can feel prosperity and a sense of security from all forms of crime arising through sea routes. In addition, on the other hand, researchers also always order my soldiers to continue to hone their skills and carry out security in Kalimantan territorial waters, especially North Kalimantan to East Kalimantan from all existing crimes (Pioneer Wiratama, 2023).

Benefits of Trilateral Maritime Patrol Indomalphi
The benefits of Indomalphi's Trilateral Maritime Patrol in the Sulu Sea are as follows:

1. Enhancing Maritime Security

Indomalphi's Trilateral Maritime Patrol aims to improve security in the Sulu Sea. With joint maritime patrols between Indonesia, Malaysia, and the Philippines, illegal activities such as piracy, arms smuggling, and terrorism can be effectively prevented and dealt with.

2. Enhancing Regional Cooperation

The initiative also aims to strengthen cooperation between the three countries in terms of handling maritime security. Through information exchange and better coordination, the three countries can work together in dealing with complex threats in the Sulu Sea.

3. Protecting Fishermen and Merchant Vessels

Indomalphi's Trilateral Maritime Patrol provides protection for fishermen and merchant vessels operating in the Sulu Sea. With active maritime patrols, risks to illegal activities and security threats can be reduced, allowing fishermen and merchant vessels to operate more safely.

4. Enhancing Regional Stability

With increased security in the Sulu Sea, Indomalphi's Trilateral Maritime Patrol also contributes to regional stability. Success in addressing security threats in the region can create a

more stable and conducive environment for economic cooperation and development in the region.

5. Building Capacity

Through the Indomalphi Trilateral Maritime Patrol, the three countries can also build each other's capacity in terms of handling maritime security. The exchange of experience, training, and equipment upgrades can improve operational capabilities and response to security threats in the Sulu Sea.

With the existence of the Indomalphi Trilateral Maritime Patrol, it is hoped that security and stability in the Sulu Sea can continue to be improved, so that the region can become a safe and prosperous zone for all interested parties.

Based on the results of this analysis, the following novelties are obtained:

1. The Sulu Sea, located in Southeast Asia, is not only a bustling hub for shipping traffic but also a hotspot for security threats including piracy, narcotics trafficking, and terrorism. This strategic sea area, nestled between the Philippines, Malaysia, and Indonesia, has prompted increased cooperation among the three countries to combat these maritime security threats. Through joint military patrols and agreements on security measures, Indonesia, Malaysia, and the Philippines are working together to protect their sea lanes and ensure safe passage for ships in the region. This trilateral cooperation highlights the importance of regional security in the Sulu Sea and reinforces the need for unified action against common threats.
2. As Indonesia faces the unique challenges of defending its vast archipelagic territory, the focus on sea defense becomes paramount. The Indonesian Navy plays a crucial role in safeguarding the nation's sovereignty and territorial integrity, with a strategic approach that involves capturing threats at their source and destroying enemies at various defense fields. The Navy's flexibility and adaptability allow for quick

responses to potential threats, ensuring maritime security and deterring potential conflicts. In formulating defense policies, various stakeholders such as the government, district house of representatives, public figures, media, and interest groups play essential roles in shaping strategies that align with national interests and global security dynamics. The sea defense policy book highlights the importance of collaboration and communication among these parties to ensure effective defense planning and implementation.

3. Sea Defense in Indonesia is not just about protecting the vast territorial waters from potential threats, it is a strategic concept that involves a multi-layered approach to safeguarding national sovereignty. With the Indonesian Navy at the forefront, the country's sea defense policy focuses on capture efforts, destroying enemies outside national boundaries, and implementing a universe defense system as a last resort. As outlined in the Sea Defense Policy Book, involving various stakeholders in policy-making, such as the government, district House of Representatives, public figures, media, and interest groups, is crucial for effective implementation. By adhering to the Integrative, Interactive, Transparency, Controlling, and Accountability (IITCA) factors, the defense policy can successfully address non-traditional threats and ensure national security in the maritime border area with Malaysia and the Philippines.
4. The trilateral maritime patrol initiative known as INDOMALPHI, involving Indonesia, Malaysia, and the Philippines, has successfully enhanced security and stability in the Sulu Sea through joint patrols aimed at preventing illegal activities such as piracy, arms smuggling, and terrorism. This cooperation has not only strengthened intelligence gathering and law enforcement

efforts but has also facilitated capacity building and improved cooperation among the three countries in handling maritime security issues. With its focus on rapid information exchange and effective coordination, INDOMALPHI's trilateral maritime patrol has significantly contributed to creating a safe and prosperous environment in the region for all stakeholders involved.

5. The Indomalphi Trilateral Maritime Patrol in the Sulu Sea represents a novel and effective approach to enhancing maritime security and cooperation among Indonesia, Malaysia, and the Philippines. By conducting joint patrols, sharing intelligence, and coordinating operations, the three countries aim to combat illegal activities such as piracy and terrorism, protect fishermen and merchant vessels, and promote regional stability. Through capacity-building and training, the Trilateral Maritime Patrol not only strengthens the security of the Sulu Sea but also fosters closer ties and collaboration between the participating nations.

CONCLUSION AND RECOMMENDATIONS

Conclusion

In securing Indonesia's border sea area in the Sulu Sea, INDOMALPHI's trilateral maritime patrol strategy has played an important role. This collaboration between Indonesia, Malaysia, and the Philippines through this trilateral has succeeded in increasing security and stability in the region.

In its implementation, INDOMALPHI's trilateral maritime patrol has faced several challenges. One is coordination between three countries that have different policies and procedures. In addition, other challenges are the vast and complex Sulu Sea area, as well as the presence of armed groups that are still active in the region.

Indomalphi's Trilateral Maritime Patrol cooperation in the Sulu Sea has yielded positive results in improving security and stability in the

region. Joint maritime patrols between Indonesia, Malaysia and the Philippines have reduced cases of piracy, drug smuggling and other cross-border crimes in Sulu Sea waters.

The policy that has been established states so far only applies to the military agencies of the three countries. Responding to threats in the Sulawesi-Sulu Sea that are non-traditional in nature and various types of threats, it is also necessary to involve civilian law enforcement agencies from the three countries concerned.

Non-traditional threats that occur such as threats to marine and fisheries resources, customs, immigration, narcotics, terrorism, and other threats. Not only that, the states involved also need to pay attention to threats from non-state actors. Non-state actors are citizens in Sanghie-Philippines who are stateless and often commit crimes at sea. In addition, the target is certain individuals and countries, which does not rule out the possibility of a massive impact.

Indomalphi's Trilateral Maritime Patrol in the Sulu Sea provides several important benefits, including:

1. Increase Security

This cooperation helps improve security in the Sulu Sea region by conducting joint maritime patrols. This helps reduce cases of piracy, drug smuggling, and other cross-border crimes in the waters.

2. Strengthening Regional Cooperation

Indomalphi's Trilateral Maritime Patrol strengthens cooperation between Indonesia, Malaysia, and the Philippines in the field of maritime security. This creates a better climate of cooperation among the countries and strengthens regional relations.

3. Exchange of Intelligence Information

The cooperation also involves the exchange of intelligence between the countries involved. This helps increase understanding of security threats in the region and enables a more effective response to illegal activity.

The future plan of the Indomalphi Trilateral Maritime Patrol in the Sulu Sea is to continue and strengthen cooperation between Indonesia,

Malaysia, and the Philippines in an effort to enhance security and stability in the region. The long-term goal of this cooperation is to reduce the threat of piracy, drug smuggling, and other cross-border crimes in the waters of the Sulu Sea.

Recommendations

To improve the effectiveness of Indonesia's border sea area security strategy in the Sulu Sea through INDOMALPHI's trilateral maritime patrol, here are some suggestions that can be considered:

1. Strengthening Cooperation

It is necessary to continue to increase cooperation between Indonesia, Malaysia, and the Philippines in terms of faster and more accurate exchange of intelligence information. In addition, there needs to be joint exercises and personnel exchanges to improve understanding and coordination among the three countries.

2. Capacity Building

The three countries need to continue to increase the capacity of personnel and equipment to carry out more effective maritime patrols. Investment in advanced maritime technology, such as radar and monitoring systems, can help improve detection and surveillance capabilities in the Sulu Sea area.

3. Development of Regional Cooperation

In addition to trilateral with Malaysia and the Philippines, Indonesia can also expand cooperation with other neighboring countries that have the same interests in securing border sea areas. This can be done through regional cooperation such as ASEAN and other maritime forums.

4. Community Empowerment

In addition to government efforts, it is also important to involve local communities in maintaining the security of border sea areas. Through community empowerment programs, such as maritime awareness training and education, communities can be important partners in reporting suspicious activity and helping secure their territories.

5. The policy that has been established states that so far it only applies to the military agencies of the three countries. Responding to threats in the Sulawesi-Sulu Sea that are non-traditional in nature

and various types of threats, it is also necessary to involve civilian law enforcement agencies from the three countries concerned, in this case the Indonesia Coast Guard or the Maritime Security Agency (Bakamla).

By implementing the above suggestions, the strategy of securing Indonesia's border sea area in the Sulu Sea through INDOMALPHI's trilateral maritime patrol can continue to be improved. Success in maintaining security and stability in the region will not only benefit the three countries involved, but will also have a positive impact on maritime stability in the ASEAN region as a whole.

REFERENCES

- Adriyanto, A., Sulistiyadi, E., Prakoso, L. Y., Sutanto, R., Sudiarmo, A. (2023). Strategi Naval Diplomacy Indo Pacific Dalam Menghadapi Nuclear Submarines Australia
- Alverdian, Indra., Joas, Marko., Tynkkynen, Nina (2020). The prospects for multi-level maritime security governance in the Sulu-Sulawesi Sea: lessons from the Baltic Sea region. *Australian Journal of Maritime & Marine Affairs*.
- Aprilia, W., Sutanto, R., Prakoso, L. Y., (2023). Defense Policy Implementation: Addressing Non-Military Threats in Batam Sea Border Area with Malaysia
- Ardiansyah, Rifky (2019) Trilateral Cooperation (Indonesia-Malaysia-Philippines) through the Indomalphi Trilateral Maritime Patrol Program to improve maritime security in the Sulu-Sulawesi Sea (2016-2019). Retrieved from: <https://elibrary.unikom.ac.id/id/eprint/1912/>
- Asean Regional Forum. (2017). Indonesia, Malaysia, and the Philippines launch Trilateral Maritime Patrol in Sulu Sea. Retrieved from: <https://asean.org/indonesia-malaysia-philippines-launch-trilateral-maritime-patrol-sulu-sea/>
- Asean.org. (2017). Perjanjian Trilateral Maritime Patrol Indomalphi. Retrieved from : <https://asean.org/storage/2017/08/Perjanjian-Tripartite-Maritime-Patrol-Indomalphi.pdf>

- Atamimi, R. A., Azzqy, A. A. R., (2020). Trilateral Cooperation Efforts of Indonesia, Malaysia and the Philippines (INDOMALPHI) in Maintaining Sulu Sea Security Stability in the 2016-2019 Period. Retrieved from : https://www.google.com/url?sa=t&rct=j&q=&esrc=s&source=web&cd=&cad=rja&uact=8&ved=2ahUKEwifzbWtnbKCAxVh-DgGHcwWBhEQFnoECAgQAQ&url=https%3A%2F%2Fjom.fisip.budiluhur.ac.id%2Findex.php%2Fbalcony%2Farticle%2Fview%2F218&usq=AOvVaw1KY6_RADtHfhzqoHF9Rysr&opi=89978449
- Bakamla. (2020). Renstra 2020-2024 Bakamla Republik Indonesia
- Bakamla. (2021). Bakamla RI: Threats in the Sulawesi - Sulu Sea Are Non-Traditional. Retrieved from: https://bakamla.go.id/publication/detail_news/bakamla-ri-threat-di-laut-sulawesi-sulu-bernature-non-tradisional
- Bakamla. (2022). Kepala Bakamla RI Hadiri Trilateral Meeting Coast Guard di Filipina. Retrieved from: https://bakamla.go.id/publication/detail_news/kepala-bakamla-ri-hadiri-trilateral-meeting-coast-guard-di-filipina
- BBC. (2017). Laut Sulu merupakan perairan 'paling berbahaya' di dunia. Diakses oleh Yurizki Aliyah melalui <https://www.bbc.com/indonesia/dunia-39451746> tanggal 1 Februari 2024
- Buzan, Barry. (1983). *People, State, and Fear*. Sussex: Wheatsheaf Book Ltd.
- Beckmann, Robert (2013). *Piracy and armed robbery of ships in Southeast Asia*. Cheltenham: Edward Elgar Publishing. P. 14. ISBN_9781849804844
- Carolin Liss. (2014). *Assessing Contemporary Maritime Piracy in Southeast Asia: Trends, Hotspots, and Responses*, PRIF Report No. 125
- Delina. A., Komara. F., (2020). Sulu Sea and Muslim Mindanao: Close in the Eye Deep in the Heart. Retrieved from: <https://imune.id/laut-sulu-dan-muslim-mindanao-dekat-di-mata-jauh-di-hati/>
- Fabian Januarius Kuwando. (2017). Indonesia, the Philippines, and Malaysia Agree on 6 Matters Related to Sulu Sea Security. Retrieved from: <http://nasional.kompas.com/read/2016/08/03/12561611/indonesia.filipina.dan.malaysia.sepakati.6.hal.terkait.pengamanan.laut.sulu>
- Ging, Ginanjar. (2018). Will Indonesian waters become the Second Somalia. Retrieved from: https://www.bbc.com/indonesia/berita_indonesia/2016/04/160427_indonesia_somalia_baru
- Gunawan. (2017). Indonesia, Malaysia, Philippines Launch Joint Patrols. Retrieved from: <https://www.benarnews.org/indonesian/berita/joint-patrols-trilateral-06192017201032.html>
- Ibrahim, H.M., dan Nezery Khalid, (2007). Growing Shipping Traffic in the Strait of Malacca: Some Reflections on the Environmental Impact (Kuala Lumpur : Maritime Institute of Malaysia)
- Ikrami, Hadyu (2018). Sulu-Sulawesi Sea Patrol: Lessons from the Malacca Strait Patrol and Other Similar Cooperation Frameworks. *International Journal of Marine and Coastal Law*.
- Indo-Pacific Defense Forum. (2022). Southeast Asian partners enhancing trilateral maritime patrols. Retrieved from: <https://ipdefenseforum.com/2022/06/southeast-asian-partners-enhancing-trilateral-maritime-patrols/>
- Irawan. Gita., (2021). Discussing the Sulawesi-Sulu Sea Security Strategy, Head of Bakamla RI: Complexity Must Be Minimized. Retrieved from: <https://m.tribunnews.com/nasional/2021/11/02/bahas-strategi-pengamanan-laut-sulawesi-sulu-chief-bakamla-ri-kompleksitas-harus-diminimир>
- Indonesian Ministry of Defense (2023). 21st INDOMALPHI JWG Meeting on TCA, Kemhan Expects Increased Collaborative Efforts of Malaysia and the Philippines on Regional Peace and Security. Retrieved from:

vektor.jpg?s=1024x1024&w=is&k=20&c=2_
ED0ubtAJRltHWn3CFc4BQssKBxiYX0wW
sFnaA5fUk=

- Rustam, I., Bustami, S. Y., & Sabilla, K. R. (2022). The Effectiveness of Indomalphi Trilateral Cooperation in Reducing Maritime Piracy by Abu Sayyaf Group in the Sulu-Sulawesi Sea. Social Science Open Access Repository.
- Safety 4 Sea (2021). ReCAAP ISC: 2020 ended with 97 piracy incidents in Asia, an increase of 17%
- Storey, Ian. (2008). Securing Southeast Asia's Sea Lanes: A Work in Progress, Asia Policy, No.6
- Sutanto, R. (2022). NAVAL AND MARITIME STRATEGY. Kasawan IPSC Sentul, Bogor, Jawa Barat: Unhan RI Press.
- The Jakarta Post. (2020). Trilateral Maritime Patrol Indomalphi. Retrieved from: <https://www.thejakartapost.com/news/2020/12/31/trilateral-maritime-patrol-indomalphi.html>.
- Teitler, Ger (2002). Piracy in Southeast Asia. Comparative History. MAST (Maritime Studies) .
- Underwater Asia. (2019) Sulu Sea. Retrieved from : <http://underwaterasia.info/dive-guide-philippines/sulusea.php> diakses 30 Maret 2019.